

# What's More Likely?

The Canon imageRUNNER ADVANCE Series was awarded BLI's

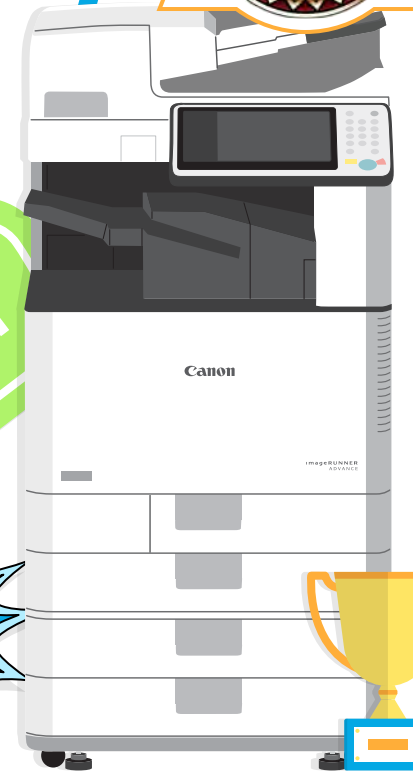
## 2020 Copier MFP Line of the Year

During testing, **2,115,000 impressions** were run on imageRUNNER ADVANCE models, with only **3 misfeeds**.

**That's a rate of only 1 in 705,000 prints!**



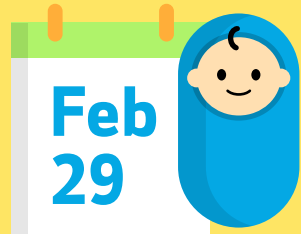
**WOW!**



## Compared to those odds, you're more likely to...

Be born on leap day

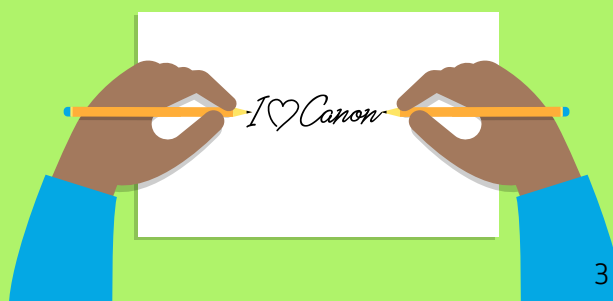
**1 in 1,461**



1

Be ambidextrous

**1 in 100**



3

Find a pearl in an oyster

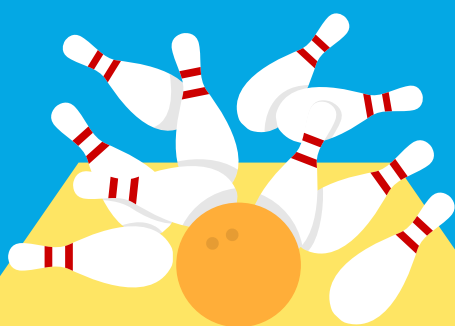
**1 in 10,000**



5

Bowl a perfect game

**1 in 11,500**



6

Be a redhead

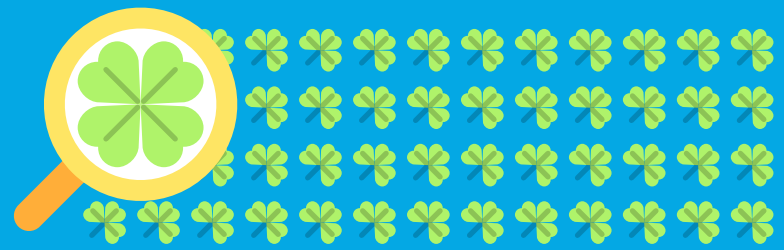
**1 in 200**



2

Find a four-leaf clover

**1 in 10,000**



4

Make a hole-in-one on a par-3 hole

**1 in 12,500**



7

Be dealt a royal flush

**1 in 649,740**



8

When it comes to keeping your business running, don't take chances. Choose the award-winning **imageRUNNER ADVANCE** product line.

For more information about Canon's awards, visit [usa.canon.com/iradvawards](http://usa.canon.com/iradvawards)

1. medicaldaily.com/leap-year-psychological-effects-375317

2. livescience.com/26633-redhead-dna-gene.html

3. rd.com/culture/facts-ambidextrous-people/

4. msn.com/en-in/lifestyle/smart-living/things-more-likely-to-happen-than-winning-the-lottery/ss-AAoJmX#image=12

5. nypost.com/2018/12/22/another-pearl-found-inside-restaurant-oyster/

6. Based on amateur bowler: golfdigest.com/story/records-rarities-the-unlikely

7. Based on amateur golfers. bostonglobe.com/metro/2017/08/24/these-extremely-rare-things-are-more-likely-happen-you-than-winning-powerball-jackpot/pq0VeHh5PpAWkJhRP310nK/story.html

8. thoughtco.com/probability-of-being-dealt-a-royal-flush-3126173

Based on lab testing done by Buyers Lab (a division of Keypoint Intelligence), an independent authority for the document imaging industry. Over a period of several weeks, BLI techs run proprietary reliability, ease of use, productivity and workflow tests designed to replicate real-world and worst-case scenarios. Engines are reliability tested using BLI's variable test schedule simulating low and high-volume environments. Canon and imageRUNNER are registered trademarks of Canon Inc. in the United States and may also be registered trademarks or trademarks in other countries. Nothing herein should be construed as legal or regulatory advice concerning applicable laws; customers must have their own qualified counsel determine the feasibility of a solution as it relates to regular and statutory compliance. Not responsible for typographical errors.