

BLI Lab Test Report

A Comprehensive Keypoint Intelligence Lab Evaluation

Canon imageRUNNER ADVANCE DX C5860i

60 PPM Color MFP



● Reliability	10
● Hardware Value	9
● Apps/Onboard Tools	Not Rated
● Image Quality	7.5
Print Quality	7.5
Scan Quality	8
● Usability	9.5
Serviceability/Management	9
Walk-up Experience	9.5
Workstation Experience	9.5
● Security	10
● Specifications	7.5
● Speed	6.5
Print Speed	6
Scan Speed	7
Copy Speed	5.5
● Power Consumption	Not Rated

The gauges above represent Excellent (9–10), Very Good (7–8.5), Good (4–6.5), Fair (1.5–3.5), and Poor (0–1). For detailed information on lab test results, visit this product's bliQ page and see the Test Results section.

November
2021

OUR TAKE

The Canon imageRUNNER ADVANCE DX C5860i is a tremendous choice for medium to large workgroups. Heading the list is its flawless reliability during our rigorous assessment, outputting 300,000 pages without a single misfeed and no service needed. And, when combined with impressive user friendliness and straightforward maintenance procedures, productivity won't be impeded. Notable ease of use features include a well-designed, customizable touchscreen that combines quick menu options with the main function buttons for fast access, a timeline history that allows users to quickly access their most recent jobs to perform again without having to reprogram, and the ability to create and save one-touch presets from every driver tab (and at the control panel) along with detailed comments relating to preset functions, all of which help make daily tasks more manageable and efficient to achieve. Canon's MEAP platform enables tight integration with software applications to streamline work processes, control costs, and boost security, and together with robust mobile print support provide added flexibility. Administrators can easily manage their print environment thanks to several features and functions supported. Remote access to the control panel enables administrators to troubleshoot issues quickly, while the easy-to-use embedded web server supports the ability to bookmark commonly used areas for quick access. In addition, elite security features such as McAfee Embedded Control, Verify System at Startup, and uniFLOW Online Express allow administrators to protect sensitive documents, and defend the device itself from unauthorized access. Based on its performance, Keypoint Intelligence highly recommends the Canon imageRUNNER ADVANCE DX C5860i.

Canon imageRUNNER ADVANCE DX C5860i Fast Facts

SRP/Street Price	\$25,300/None
Max Monthly Duty Cycle	Info not avail
Manufacturer's Recommended Monthly Volume	Info not avail
Rated Speed	60 ppm
Std Paper Source(s)	Dual drawer
Std Paper Capacity	550/550 sheets
Paper Weights	14-lb bond to 140-lb index
Bypass/Paper Weights	100-sheet/14-lb bond to 110-lb cover
Max Paper Capacity	6,350 sheets
System Memory & Hard Drive (Std/Max)	5-GB RAM, 256-GB SSD/5-GB RAM, 1-TB SSD
Document Feeder/Capacity	Std DSPF/200 orig
PDL/PCL	Adobe PostScript 3, PCL 6, UFR II
Scanner Technology	Proprietary image sensor
Scan Speed (Simplex/Duplex)	135 ipm color, 135 ipm black/270 ipm color, 270 ipm black
Specs at the time of publication.	

TEST DURATION: Two months, including a 300,000-impression durability test.

Please visit www.buyerslab.com/bliQ for more information.

BENEFITS

- Outstanding reliability and easy maintenance procedures will keep your demanding workflows moving day in day out
- Flexible cloud connectivity and mobile print support lets you collaborate with peers and stay productive while on the go
- Canon PRINT Business app supports touchless MFP operation, providing the same user interface experience to boost ease of use
- Take advantage of Canon's MEAP platform to connect to specialized and embedded applications
- High quality colour and black output will ensure your general office and marketing communications stand out
- Broad range of administrative tools and utilities, such as an easy-to-use web utility and remote control panel access, helps IT personnel to better manage, troubleshoot, and diagnose devices
- Proactive device management via Unified Firmware Platform, which provides regular updates to features and interface enhancements to all devices in a fleet
- Excellent security features including Verify at Startup and McAfee Embedded Control protects your business intelligence and environment
- UniFLOW Online Express provides flexible authentication, device and function level access rights and the ability to extend scan features into the cloud and to users' emails without the need for onsite servers or IT resources
- Easy, logical menus, customizable panel and driver, and profile creation simplify job programming at the desktop and boost walk up efficiency

ADVANTAGES

- Fast first-print times when printing XLS, PPT, Word, and PDF files
- Fast speeds when scanning single-sided documents in colour
- Smaller-than-average file sizes in colour when compressed, and in black with no compression available
- Above average searchable PDF accuracy
- Above average rated toner and drum yields means they will need replacing less frequently

LIMITATIONS

- Slower-than-average speeds when printing short-run jobs
- Slower-than-average colour scan speeds in duplex

- Scan preview does not support on-screen editing
- No search function in the embedded web utility to quickly locate device settings and administrative tasks

RELIABILITY

10

- The Canon imageRUNNER ADVANCE DX C5860i delivered an exceptional overall reliability assessment. No misfeeds occurred over the course of its 300,000-impression durability test, and no service calls were required.

Impressions Printed	300,000 impressions
Misfeed Rate	Not applicable
Service Calls	0

HARDWARE VALUE

9

- First-rate reliability, smooth operability, and an attractive price point all combine to make the device an excellent value proposition

*Hardware value is based on suggested retail price for comparably configured models, along with burden rates which include aspects of reliability, usability, and productivity.

APPS/ONBOARD TOOLS

NOT RATED

- Canon's Multifunctional Embedded Application Platform (MEAP) enables more complex work to be conducted as well as more automation via seamless integration between the DX C5860i and specialized applications accessed directly from the control panel. The imageRUNNER ADVANCE DX series can keep up with latest firmware updates through Unified Firmware Platform (UFP), ensuring users can easily adopt the latest market technologies with minimal intervention.
- Standard uniFLOW Online Express is a cloud based solution that supports several authentication methods including proximity cards, PIN code, or username and PIN code. From a web based customizable dashboard, administrators can manage security, track usage and costs, as well as create and export a range of user and device activity reports. Users can send a job to their personal print queue and then release it at the device after login, and scan a file to their personal folder or to their Google Drive account.
- Optional uniFLOW Online is available as a device-based cloud subscription for document output and capture management. Depending on their business needs, users can upgrade to uniFLOW Online and access an array of benefits, including the ability to digitize documents with automated workflows connected to applications such as OneDrive, SharePoint, Concur, DropBox, and Microsoft Teams. In addition, user authentication methods and secure printing, mobile printing, and guest printing from any device provide increased security. uniFLOW Online can also automatically file documents with cloud-based Filing Assist for personalized workflows.

- Canon imageRUNNER ADVANCE DX integrates with document processing services – from simple connectors to advanced process automation solutions. This is enabled through Canon’s Cloud Workspace Collaboration, which is a comprehensive, scalable, and flexible subscription service delivering content optimization and document management solutions for more streamlined business processes. It includes pre-integrated cloud connectivity for cloud storage and print from cloud with uniFLOW Online; document capture solutions with pre-integrated connectivity to cloud based applications with SAP and Therefore Online; and, end-to-end content management and process automation solutions for workflow optimization, amongst others.

IMAGE QUALITY

7.5

PRINT QUALITY

7.5

- Bright, well saturated business graphics with above average reproduction of pastel shades and backgrounds, and consistency of KATUN solid colours; photographic images exhibited an excellent range of shades and above average sharpness and smoothness, while skin tones were slightly reddish
- Averagely dark text; characters were sharply defined and smooth, with no breakup
- Bold solids, with smooth coverage consistency
- Distinct fine lines with above average consistency; circles are fully formed and no stair-stepping with diagonal lines
- Halftones remained distinct over the entire measured range, with above average smoothness of patterns

Print Density

	Tested Device	Competitive Average
Black	1.48	1.45
Cyan	1.23	1.09
Magenta	1.21	1.17
Yellow	0.96	0.89

Measurement for black is based on the average of four density readings taken from four different solid black locations on the output. Measurements for color are based on the average of two density readings taken from two different solid blocks of color for each color (cyan, magenta, and yellow). The higher the density reading, the darker the image.

Copy Density

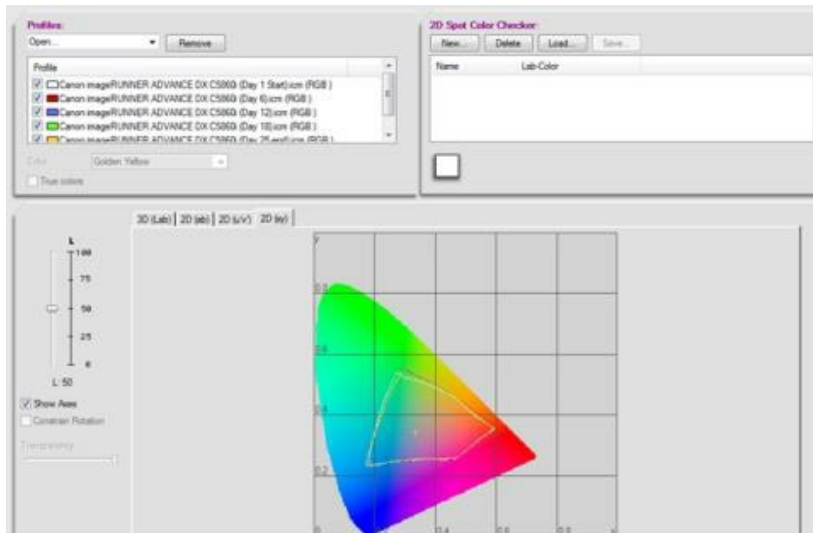
Original	Tested Device	Competitive Average
1.72	1.62	1.48

Measurements are based on the average of two density readings taken from two different solid blocks of black and, if a color device, each color (cyan, magenta, and yellow). The higher the density reading, the darker the image.

Color Gamut

Test Point	Delta E	Delta E (2000)	Rating
69,000	3.7	2.6	Very Good
138,000	3.3	2.4	Very Good
214,500	4.8	3.4	Good
300,000	3.6	2.6	Very Good
Average KPI Rating			Very Good

The above chart/graph represents the change in the device's (overall) color gamut, taken at four specific points during the evaluation. Each test point is compared to the starting point and the Delta E measurement represents how far the device's color has changed over time. The higher the number/measurement, the more significant the change.



Delta E is a colorimetric measurement assessing the distance between colours. The readings reflect the average shift of four specific colour points within the colour gamut from the previous measured point.

SCAN QUALITY

8

- Blank page removal and auto rotate are supported and worked well in tests
- Background suppression is supported (and includes control over the degree of removal); it worked well in tests, removing the first side background, as well as preventing bleed through on the second side of documents
- Image deskew and colour dropout are not supported
- Scan to PowerPoint is provided as a function, and handled all images, backgrounds, and large fonts very well, while bullet list boxes and smart art were partially handled
- Scan to Excel is not supported, unlike with some competitors
- Scan to Word was able to handle justified text and text wrapped around images very well; images, left and right text alignment were partially handled while tables/charts, vertical text, and large fonts were not handled successfully
- Searchable PDF accuracy was well above average for the tested group, and among the best tested to date

Searchable PDF Accuracy Test (Success Rate in Percent)

Tested Model (text mode)	Competitive Average
100	68

Testing is conducted using a 32 page KPI proprietary test target with all master hard copies printed as one batch from a single device and used once to ensure no degradation impacts the scan capture. Styles evaluated include Arial and Times New Roman italic and non-italic fonts, 10, 8, and 6 point font sizes; black, grey, blue and red font colors. The test target comprises a wide range of text and numerical based items that would be valuable search criteria including personal and company names, places, and official document numbering conventions. Scanning is conducted in auto color mode, in text and text photo mode, at 300dpi with no compression with the higher of the two capture modes used (Text or text/photo) for overall score. The overall result for the test is based on the overall score across the 32 pages with weighting applied and expressed as an item search success rate (Note: this is not assessed based on character level success rate as per OCR desktop software testing protocol).

Image Processing Functionality

Image Processing Function	Available	Test Result	
Auto Rotate	Yes	+	
Blank Page Removal	Yes	+	
Image Deskew	No	-	
Background Suppression	Yes	+	
Color Dropout	No	Red	-
		Blue	-
		Green	-
		Orange	-
		Purple	-
		Yellow	-
		Graduated Red	-

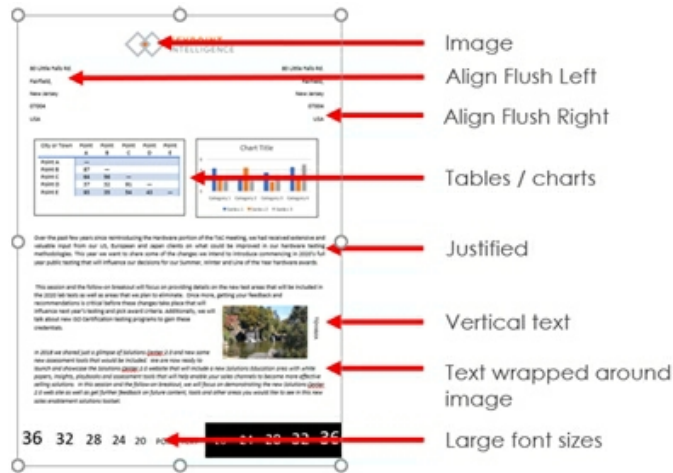
Tests conducted using KPI proprietary test documents to evaluate the performance of each function. Illustrates additional image processing options that are included using the device's built-in capabilities. No cloud based or desktop functionality is included.

+ = Full support; 0 = partial support; - = no support

Scan to Office Format Test

Testing is conducted using KPI proprietary test targets with all master hard copies printed as one batch from a single device and used once to ensure no degradation impacts the scan capture. Scans are conducted in text photo scan mode, with scanning set to auto color, at 300dpi, with OCR on. KPI assesses which of the document test elements has been successfully handled. The result for the test is based on how many of the elements have been successfully converted into editable elements in the resulting Microsoft Office file format and does not judge an editable element when converted into a non-editable image as a successful conversion (except for images).

Scan to Word File Format Test



Test element	Conversion
Image (logo and photo)	o
Align flush left	o
Align flush right	o
Tables/charts	-
Justified	+
Vertical Text	-
Text wrapped around image	+
Large Font Sizes	-

+ = successful conversion; o = partial conversion; - = unsuccessful conversion; NA = not supported

Scan to Excel File Format Test

[illegible]

Test element	Conversion
Image	NA
Text Formatting	NA
Field titles in reverse block	NA
Numbers placed correctly on correct cells	NA
Cell shading for easy navigation	NA

+ = successful conversion; o = partial conversion; - = unsuccessful conversion; NA = not supported

Scan to PowerPoint File Format Test



Test element	Conversion
Image	+
Bullet point box	o
Smart art using vector graphics	o
Background design	+
Large Font Sizes	+

+ = successful conversion; o = partial conversion; - = unsuccessful conversion; NA = not supported

USABILITY

9.5

SERVICEABILITY/MANAGEMENT

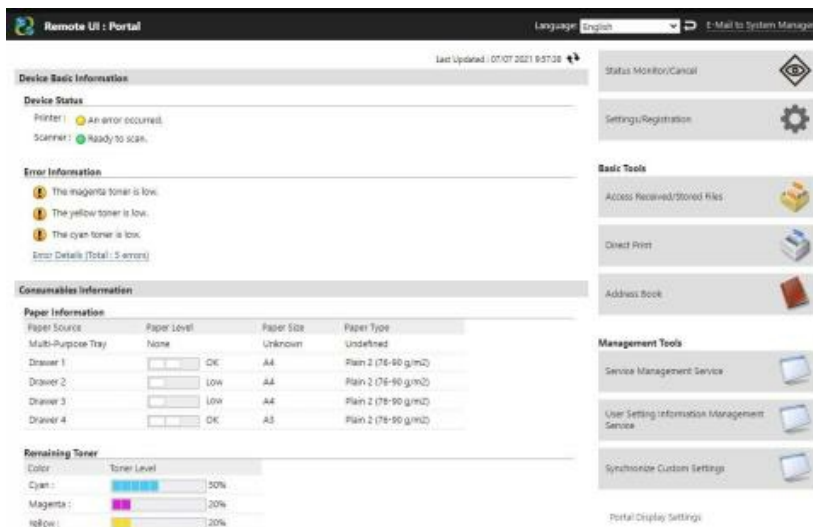
9

IT Administration	9.5
Setup	10
Utilities	9.5
Maintenance	8.5

- The web user interface (Remote UI) provides a high level of functionality overall, and is logically organized and straightforward to work in. Once a feature or function is located, administrators can create a shortcut when on a tab or settings page frequently used for faster access, however, there's no built-in search function to quickly locate device settings and administrative tasks initially.
- Remote panel operation allows IT personnel to monitor and operate the control panel from any PC desktop in

which the utility has been installed on. This makes it much easier for IT staff to troubleshoot error conditions, change device settings, and provide real-time interactive user support, especially when the machine is located on a different floor.

- The Canon Office Printer Utility application downloads and installs automatically on PCs running Windows 10 after driver installation is completed. The utility appears on the Windows menu and provides a link to Remote UI alongside basic feedback on device status. For non-Windows 10 environments, users must register a Windows Store account in order for the application to auto install.
- IW Enterprise Management Console (iWEMC) is a web-based network device management solution, designed to reduce the total cost of ownership of multifunction printers (MFP) and single function printers (SFP) and ensure maximum productivity. Aimed at medium to large enterprises, it is designed to manage, monitor and control multiple networked MFPs and printers across an organization, for Canon and third party devices (note, management of third party devices will be limited).
- Meter readings can be sent to dealers for free via Canon eMaintenance. Canon eMaintenance automates meter collection and provides real-time diagnostics and alerts for consumables and error conditions. Combined with Canon's Content Delivery System (CDS), eMaintenance allows for offsite firmware upgrades. It can also gather basic meter and status information for third-party hardware.
- Canon's imageRUNNER ADVANCE DX series operates on the Unified Firmware Platform (UFP), which provides the ability to add features and functionalities on an ongoing basis to products already placed in customer environments, with minimal user input. In particular, UFP offers Auto Firmware Upgrade capability which means if the device has access to the web, users can download the latest firmware for it from Canon's distribution server, either at specified intervals or as soon as the latest version is released.



Remote UI : Portal Language: English E-Mail to System Manager

Last Updated : 07/07/2021 9:57:08

Device Basic Information

Device Status

Printer : ● An error occurred.

Scanner : ● Ready to scan.

Error Information

1 The magenta toner is low.

1 The yellow toner is low.

1 The cyan toner is low.

Error Details (Total : 3 errors)

Consumables Information

Paper Information

Paper Source	Paper Level	Paper Size	Paper Type
Multi-Purpose Tray	Name	Unknown	Undefined
Drawer 1	OK	A4	Plain 2 (75-90 g/m ²)
Drawer 2	Low	A4	Plain 2 (75-90 g/m ²)
Drawer 3	Low	A4	Plain 2 (75-90 g/m ²)
Drawer 4	OK	A3	Plain 2 (75-90 g/m ²)

Remaining Toner

Color	Toner Level
Cyan	50%
Magenta	20%
Yellow	20%

Management Tools

- Status Monitor/Cancel
- Settings/Registration
- Basic Tools
 - Access Received/Stored Files
 - Direct Print
 - Address Book
- Service Management Service
- User Setting Information Management Service
- Synchronize Custom Settings
- Portal Display Settings

The main screen of the web user interface, Remote UI, includes notifications and gauges on the status of the device including paper drawers (OK, Low, Empty) and consumables in 10% percent increments. A broad range of tasks can be performed including remotely configuring network settings, setting up LDAP and authentication, viewing detailed job lists for all functions, and remotely programming and managing addresses for scan and email, as well as managing mailboxes and ID codes.

Status Monitor/Cancel E-Mail to System Manager

Copy/Print
Job Status
Job Log

Send
Job Status
Job Log

Receive
Job Status
Job Log

Store
Job Status
Job Log

Error Information
Consumables
Device Features
Device Information
Check Counter

Status Monitor/Cancel : Copy/Print : Job Log Last Updated : 01/07/2021 10:01:25

Store in CSV Format... Printer ▼ Display

Job No.	Result	Start Time	End Time	Department ID	Job Type	File Name
5241	OK	30/06/2021 11:33:04	30/06/2021 11:33:17		Printer Rear	Katun Color Test Pattern.pdf
5240	OK	30/06/2021 11:33:20	30/06/2021 11:33:33		Printer Rear	Katun Color Test Pattern.pdf
5239	OK	30/06/2021 10:33:58	30/06/2021 10:34:11		Printer Rear	Katun Color Test Pattern.pdf
5238	OK	30/06/2021 10:32:38	30/06/2021 10:32:51		Printer Rear	Katun Color Test Pattern.pdf
5237	OK	29/06/2021 13:01:38	29/06/2021 13:01:49		Printer Rear	Simple PDF print
5236	OK	29/06/2021 10:01:35	29/06/2021 10:01:46		Printer Rear	Microsoft Word - 6NORIG
5235	OK	29/06/2021 9:44:13	29/06/2021 9:44:27		Printer Rear	Microsoft Word - 6NORIG
5234	OK	24/06/2021 14:17:00	24/06/2021		Printer Rear	20 page durability document.pdf

Job logs within the Status Monitor menu of the web user interface include the number of output pages by function, paper size, and start and end times; reports can be exported as .csv files.



Trays are easy to adjust when accommodating differently-sized media; width and length guides feature lock tabs to squeeze and move. The drawers also feature easy-to-see limit indicators, and soft close when partially pushed.



Replacing toner is simple and clean, with consumables located at the front of the device for easy access, however users cannot replace toner while the device is actively printing. The waste toner container, drums, and fuser unit are also easily-replaceable for added convenience.



All misfeed areas are highly accessible with all knobs and levers coded in green for clearer identification.



Misfeed clearance is a hassle-free process, with extensive, step-by-step dynamic guidance provided on the display to aid users.

Consumable Rated Yields

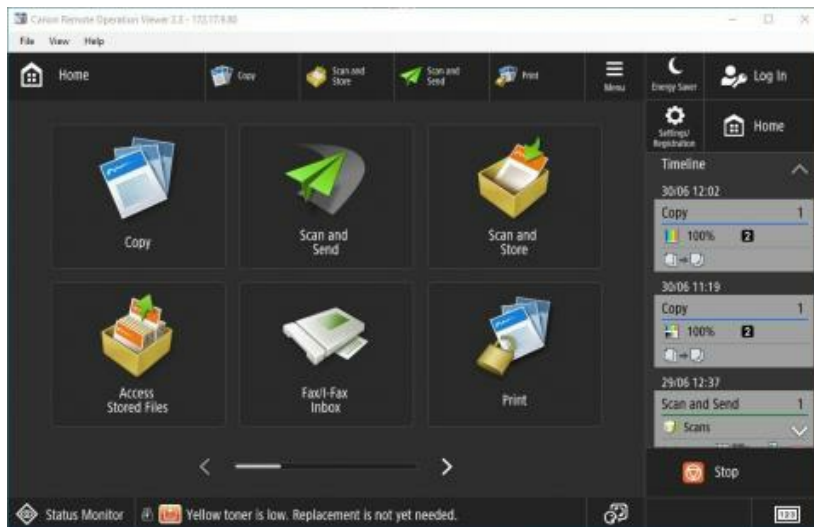
Component	Competitive Average	Tested Model
Black Toner	39,610	71,000
Color Toner	26,353	60,000
Black Photoconductor	270,083	482,000
Color Photoconductor	241,041	410,000

WALK-UP EXPERIENCE

9.5

Scan	10
Copy	9.5
Job Management	8
Multitasking	10

- The 10.1-inch touchscreen is tiltable up to 90 degrees to aid accessibility, and menus are logically organized. It offers a high level of customization on a user-by-user basis with authentication. Users can save their preferences as one-touch programs and customize the Home screen appearance according to their preferences, with features added, removed or relocated. Up to four quick function one-touch keys and up to nine job presets can be created.
- Screen Magnification can be enabled, which allows the user to use pinch gestures to enlarge the screen's content. Basic express copy and scan menus are available for simplified programming however they need to be enabled by the administrator with the device restarted for the change to take effect.
- Scan and copy previews allow users enlarge the view, swipe through multiple pages, move, replace, rotate, and delete pages but cannot perform onscreen editing.
- Scan to USB automatically populates upon insertion of the USB into the device. Scan to USB supports sub-folders and the creation of folders for the storage of files. File formats supported include encrypted PDF, compact PDF, and searchable PDF. Additional scan to USB features supported include duplex, blank page removal, the ability to name files, and a thumbnail view of selected features.
- Scan file management is bolstered with an auto-file split capability, enabling multiple-page documents to be scanned and stored, or emailed in manageable sizes (with the size limit set in the embedded web server) without falling foul of a company's email file size policy limits.
- Copy, scan, and print job status can be viewed under individual queues while running, with approximate time to print job completion shown. In terms of moving jobs and prioritization, jobs can to be moved to the top; but cannot be moved up to slot at a time. Users can select Interrupt and Print override, which will pause current job and print selected job. An added benefit with Interrupt is that the current job will continue to run until the interrupted job is fully programmed.



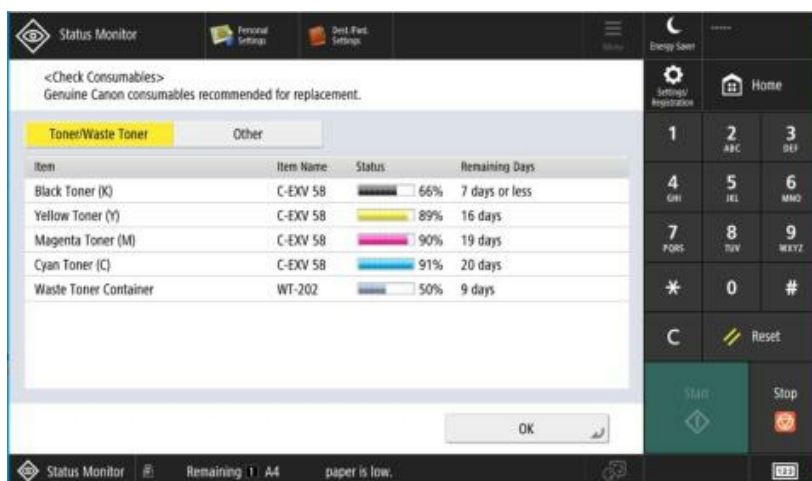
Available on the home screen, a Timeline feature enables users to access their 10 most recent copy and scan jobs performed on the device with the ability to execute any one of the listed jobs again for easy repeat work. A long tap action brings up a contextual menu that offers users the ability to register, delete, and move personal buttons on the home screen.



The Copy main screen offers a clean interface from which it is easy to program settings; users can customize the screen to show their preferred options, and create up to nine favourites for commonly run jobs. Submenu features can also be moved to and replaced on the main screen.



The keys on the QWERTY keypad are comfortably spaced, boosting ease of use. In addition, the scan to email function supports the ability to store common extensions or web domains as one-touch keys to simplify data entry, with .com; .org; .net; and .biz plus four additional custom extensions available.



Canon's imageRUNNER ADVANCE DX series provides toner and waste toner levels in 1% increments directly from the control panel, as well as the number of days remaining for consumables based on usage, to enable a more efficient reorder and replacement process. A low notification timing is compatible with eMaintenance, and real time monitoring helps keep downtime to a minimum.

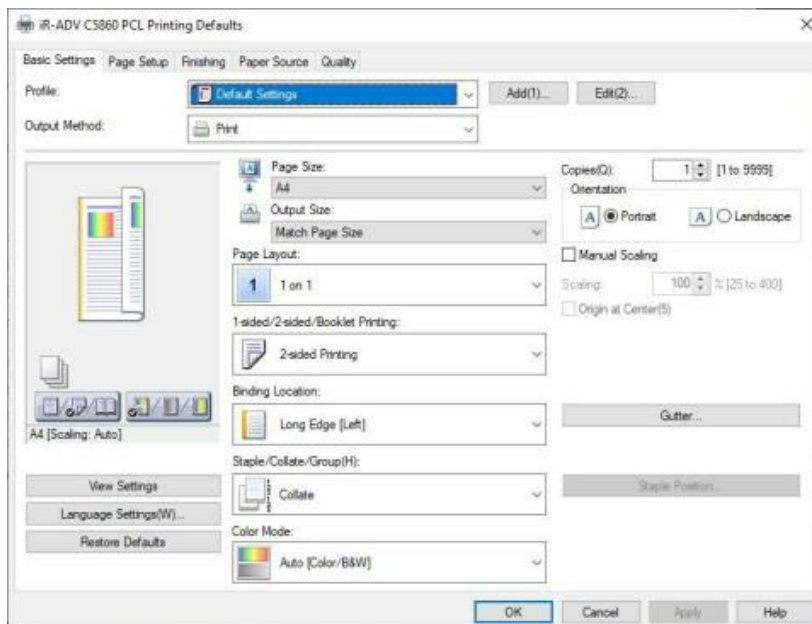
WORKSTATION EXPERIENCE

9.5

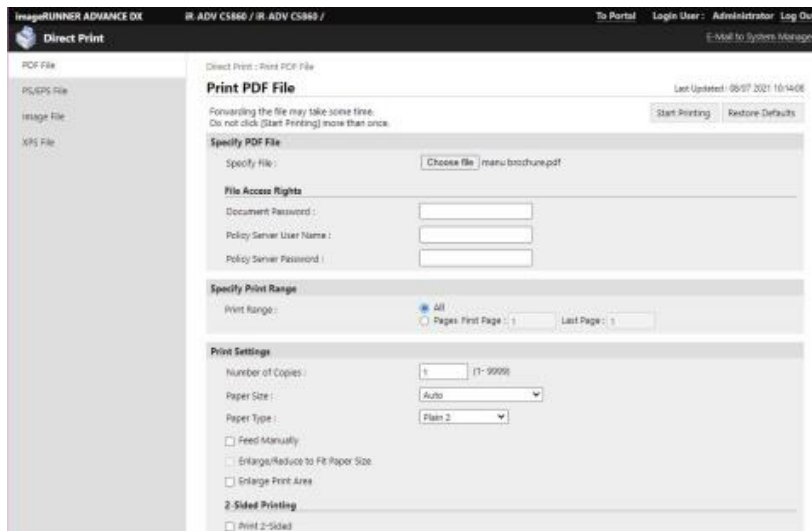
Print	9.5
Feedback	10

- Job programming at the desktop is simple thanks to the well-designed print driver, offering clear setting options, and a dynamic Help button on every tab, making it easier for users to understand what each driver function is used for.
- While the order of tabs cannot be rearranged, Canon offer a separate utility called Canon Driver Configuration Tool (CDCT) to allow users to create a customized driver. Note that Canon provides this tool via support providers in some areas. Users can create and save presets (and add a description) from every tab.

- Any driver settings that aren't compatible are automatically greyed out, so the user can't select them minimizing the potential for errors.
- Canon's Quick Printing Tool is a utility included with its iW Desktop software, which is available to new users on a 60-day trial basis. After the trial expires, the Quick Printing Tool remains on the PC. This tool provides pop-up alerts when print and fax jobs are transmitted, complete, or cancelled; device status and error alerts are indicated by icons on the task bar and Quick Printing Tool. If an error occurs, the details are available via Remote UI, which is available in a link by right-clicking on the Quick Printing Tool.
- Secure print functionality is above average. With Restrict Access to Other User Jobs' settings enabled, a walk-up user is prevented from viewing another user's secure print job filename (but not username), and they cannot delete or do anything with that secure print job. With Canon's Universal Login Manager enabled, usernames and filenames will remain private in the secure queue before user identification.
- With Canon's uniFLOW Online Express enabled, users can submit jobs to the printer with Secure Print as the output method, which means once they authenticate themselves at the device, they will be able to see and release their jobs from their personal print queue securely at the device.



Ease of use is boosted due to most of the commonly used features being programmable from the first driver tab (Basic Settings). Users can save an unlimited number of presets for commonly run job types on every tab of the driver and add comments to quickly identify settings, and move the more frequently used profiles higher up the list for easier access.



The web user interface enables users to print JPEG, TIFF, PS, PDF, and XPS formats directly, though Office formats are not supported. Multiple jobs can be released at the same time, and profiles can be created for easier operation. A good range of settings are available including duplex, staple, paper size and source, quantity of sets, and username and ID. Other features supported include halftone, smoothing and trapping adjustment, N-up printing, and print from URL; users can also save their files to a Mail Box of their choosing on the device at the same time as printing them.

SECURITY

10

- Standard secure print, encrypted secure print, encrypted scanning, and encrypted USB scanning
- Standard hard drive overwrite, encryption, and hard disk drive lock; optional hard drive removal
- Administrators can limit or restrict access to the control panel and the USB port; Canon's Access Management System can configure user access on a feature-by-feature basis on any imageRUNNER ADVANCE device
- Standard digital signature and IP and MAC address filtering support
- Optional ID card authentication; no support for biometric authentication
- Additional security features that are consistent across the DX series, include a combination of Verify System at Startup and McAfee Embedded Control which ensure BIOS, firmware, and MEAP applications running on the device are all valid and genuine; TPM 2.0 which provides robust encryption technology to protect critical data; Universal Log in Manager (ULM); and, uniFLOW Online Express, which can be upgraded to uniFLOW Online.

For a list of included security features, please visit www.buyerslab.com/bliQ.

SPECIFICATIONS

7.5

- Touchless MFP Operation is supported with the Canon PRINT Business App; the user interface on the MFP control panel is replicated on and operable from compatible smartphones or tablets, in real time and for any device function
- Standard Mopria and optional NFC support allows Android users to pair their mobile devices with the device easily and print to it while on the go; additional mobile and cloud print support for AirPrint
- Above average standard non-upgradeable memory; standard 250-GB hard drive capacity is below average; however, it can be upgraded to 1-TB which is above average in this class

- Competitive standard and maximum paper capacity
- Media weight accommodated through the drawers (256gsm) and bypass (300gsm) is competitive in this class
- A 200-sheet duplex single pass feeder supports multi-feed detection to minimize risk of misfeeds and scans at up to 270 ipm
- Finishing and bindery inline options are available for more complex output, including a staple finisher which supports a 3,250-sheet paper capacity from two trays and offers 50-sheet stapling, alongside eco 'stapleless' stapling up to 10 sheets, and staple on demand. An additional booklet finisher incorporates the staple finisher features with the ability to fold up to 20 sheets (80-page booklets); several 2/4 and 4 hole punch units are supported, too
- Above average black and colour toner and black and colour drum yields

SPEED

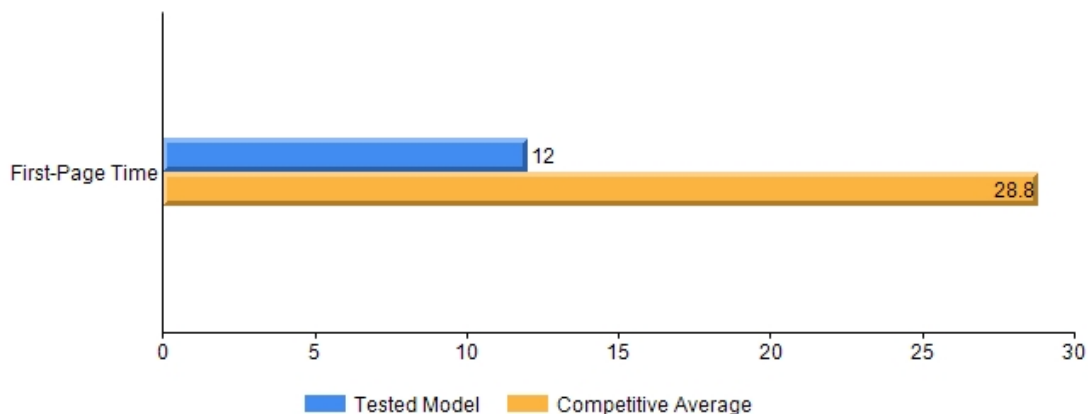
6.5

PRINT SPEED

6

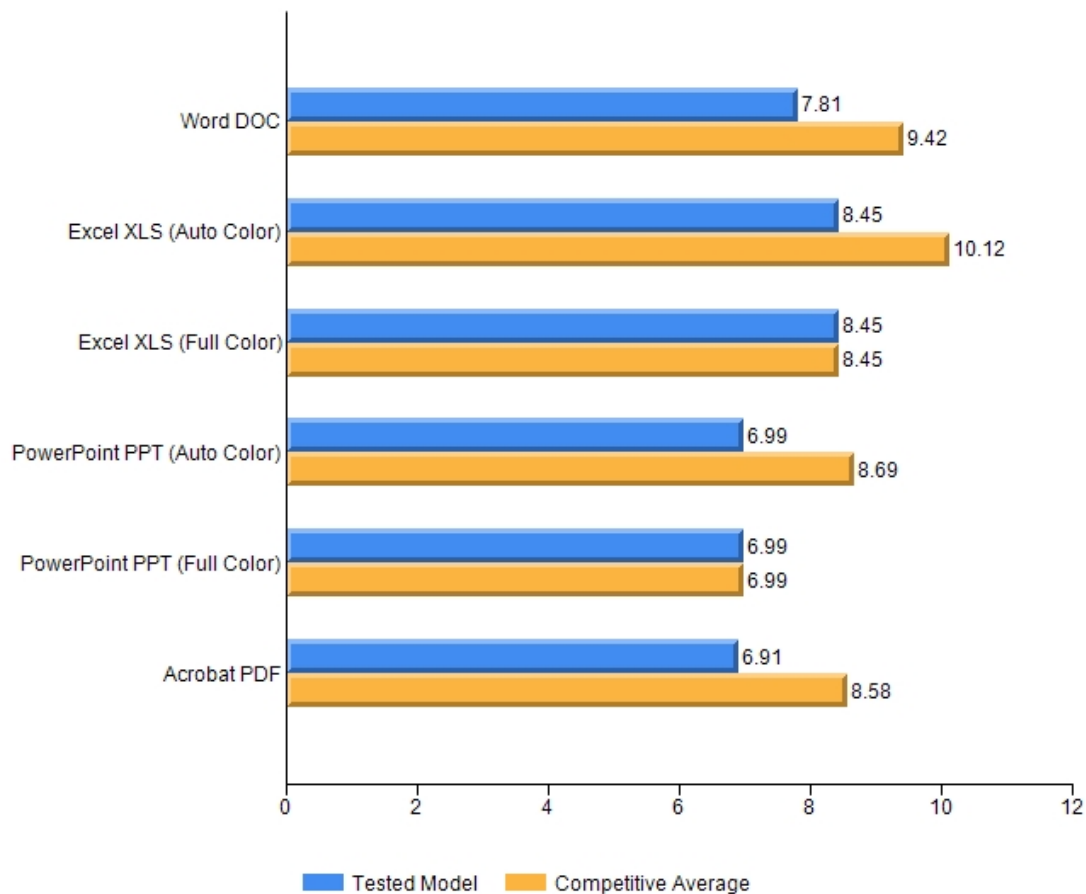
- While print speeds were slower than average for single-set jobs, first-print times for all four Office files were faster than average, as was recovery from daytime sleep. Longer-run jobs were competitive overall.

Recovery Times (in Seconds)



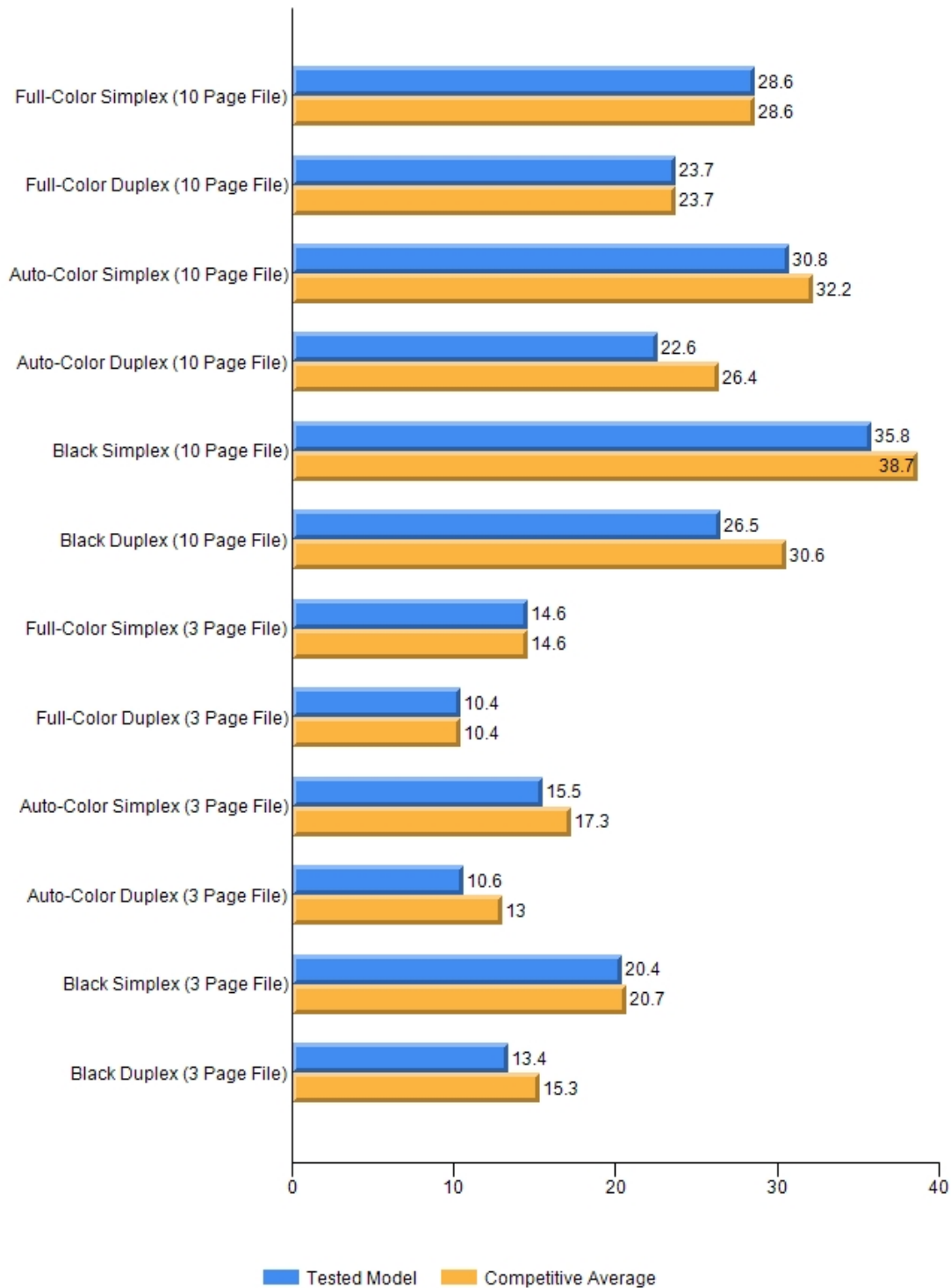
Recovery time in seconds indicates the time it took to warm up, process the image and deliver a single-page test document to the output tray. The unit was tested with the PCL 6 driver.

First-Page Print Time From Ready Mode by File Type (in Seconds)



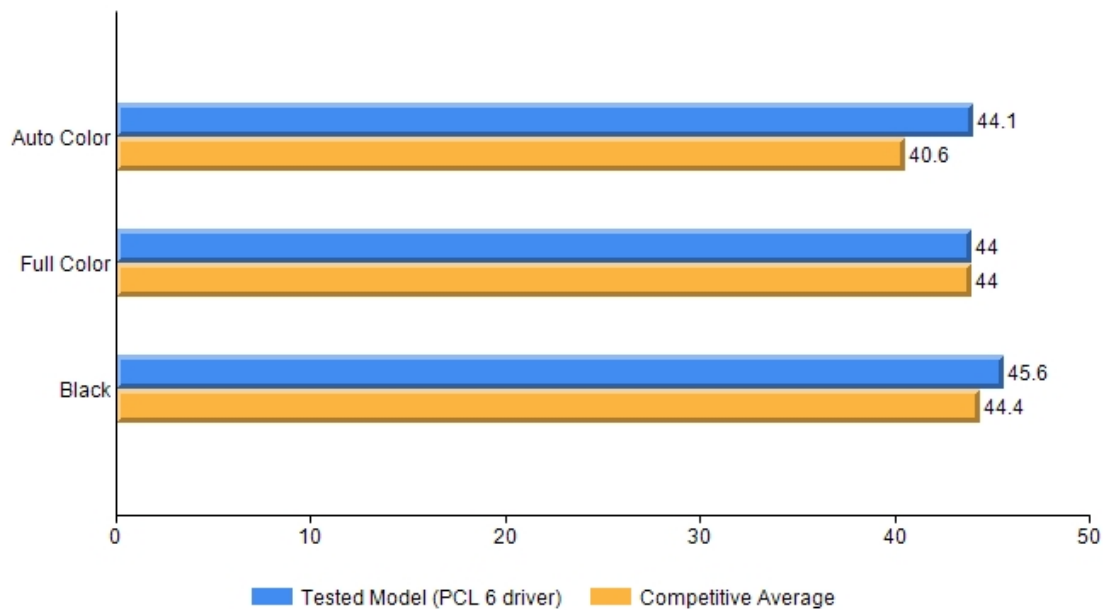
First-print time indicates the time it took to process the image and deliver a single-page test document to the output tray. The unit was tested using the PCL 6 driver.

Single-Set Print Speed (in PPM)



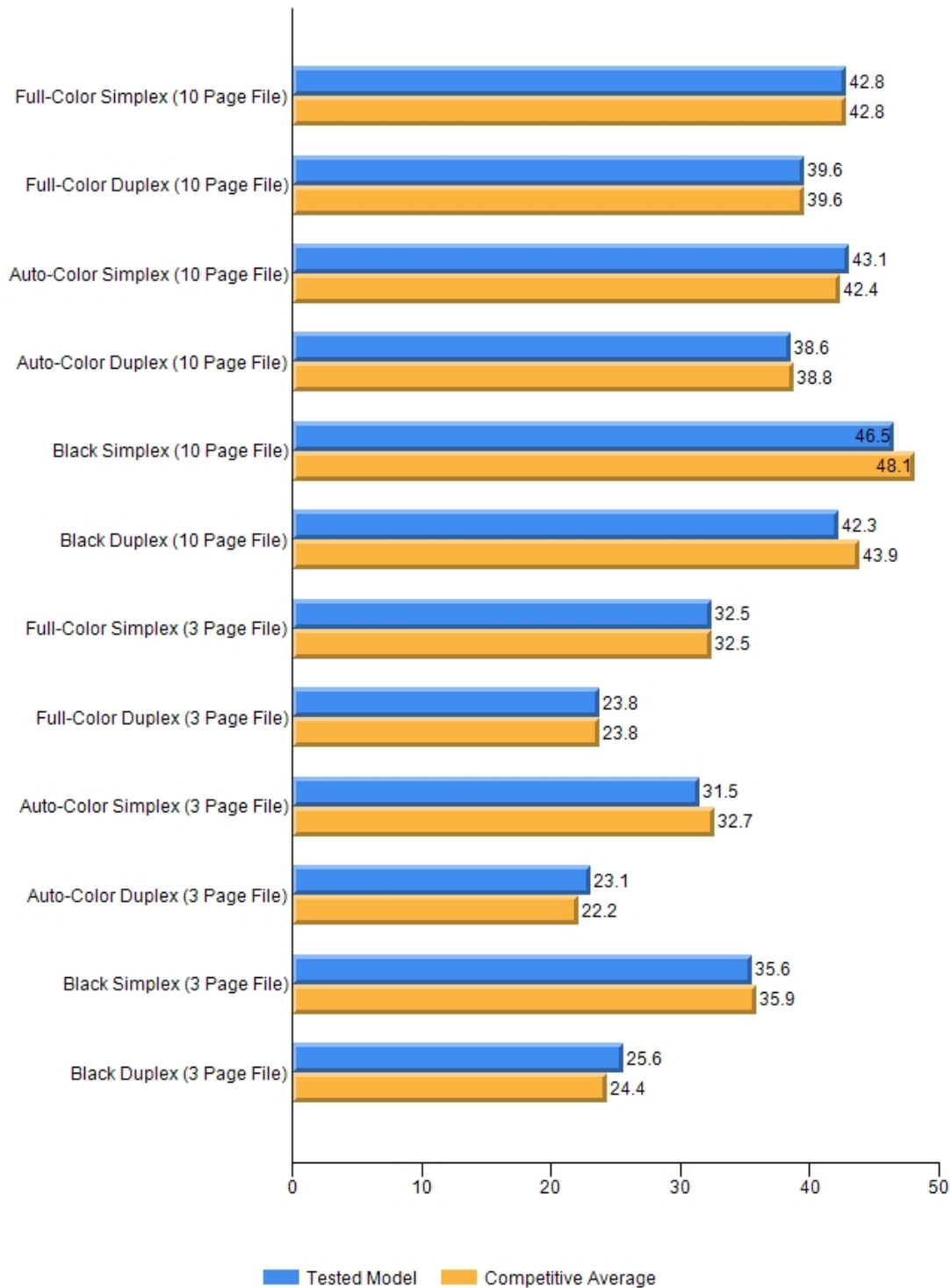
Single-set speed is tested using Keypoint Intelligence's proprietary 3-page and 10-page testing documents. The unit was tested using the PCL 6 driver.

Job Stream Test (in PPM)



Keypoint Intelligence's job stream includes Word documents, Outlook email messages, Excel spreadsheets, PowerPoint, HTML and Acrobat PDF files, totaling 19 pages. This test simulates the type of traffic a typical device might experience in a real-world, multi-user environment. All of the files are sent to the device as a group, at which time the stopwatch begins; timing ends when the last page of the last file exits the device.

Average Print Speed (Multi-Set; in PPM)



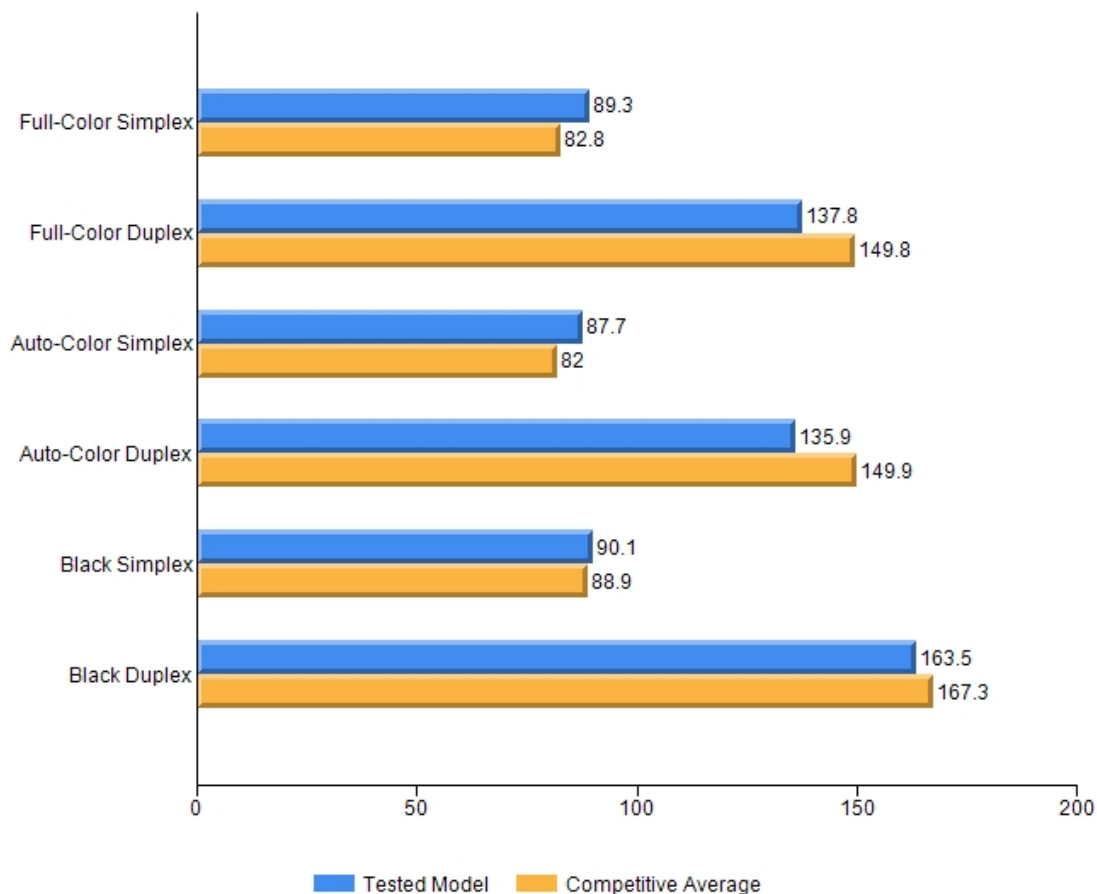
Speed is tested using Keypoint Intelligence's proprietary 3-page and 10-page testing documents. Keypoint Intelligence obtains the overall speed by averaging the tested speed for each run length. The unit was tested using the PCL 6 driver.

SCAN SPEED

7

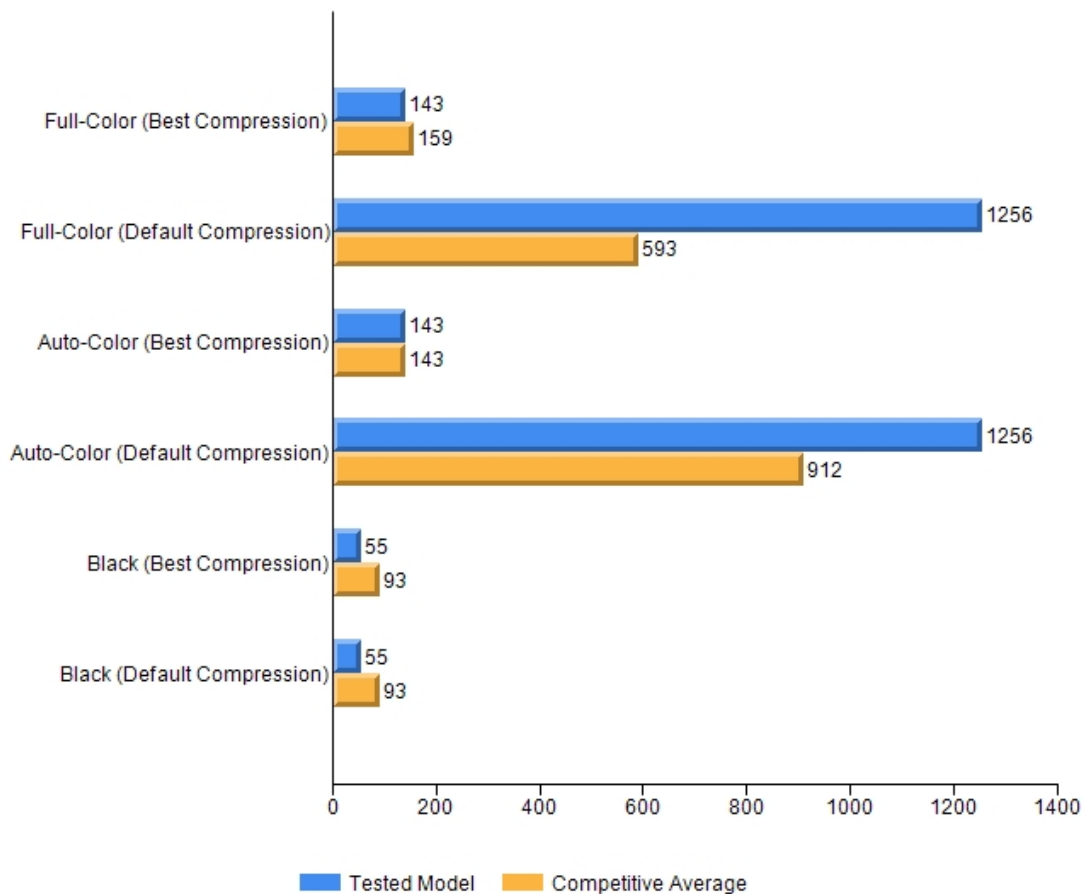
- Scan speeds were faster than average in colour simplex mode, but slower than average in colour duplex mode. Scan speeds were competitive in black mode. Compressed colour file size was smaller than average, as was black file size in default with no compression available.

Scan Speed (in IPM)



Testing is conducted with a 10-page file scanned in default mode at 300 dpi in PDF format.

Scan File Size (in KB)



Testing is conducted with single-page files scanned at 300 dpi in PDF format.

Image Processing Impact

Scan Test Workflow	Scan Speed (ipm)	Efficiency vs default (percent)	Competitive Average (percent)
Default 300dpi PDF	68.61		
Searchable PDF	39.59	58	44
Compact/High Compression PDF	40.71	59	64

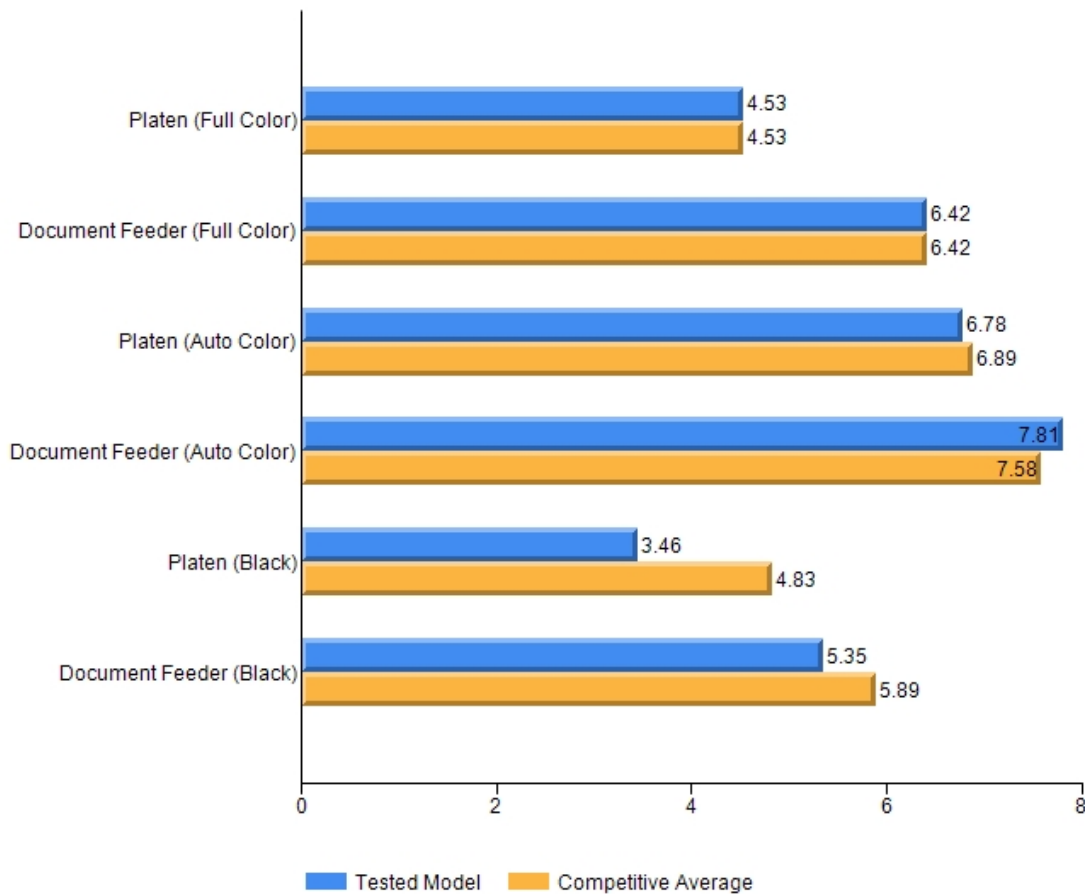
Testing is conducted using a KPI proprietary 10 page test document, scanned in auto color mode at 300dpi in simplex mode. Times recorded from scan initiation to file transfer completion to USB memory stick. All jobs repeated twice and an average taken. No cloud based or desktop functionality is included. Illustrates impact on walk up time when additional image processing tasks are included using the device built-in capabilities.

COPY SPEED

5.5

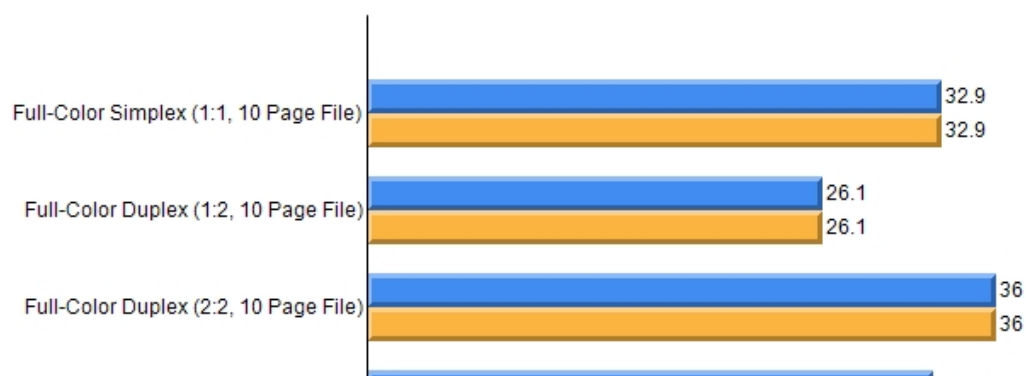
- Copy speeds were largely competitive.

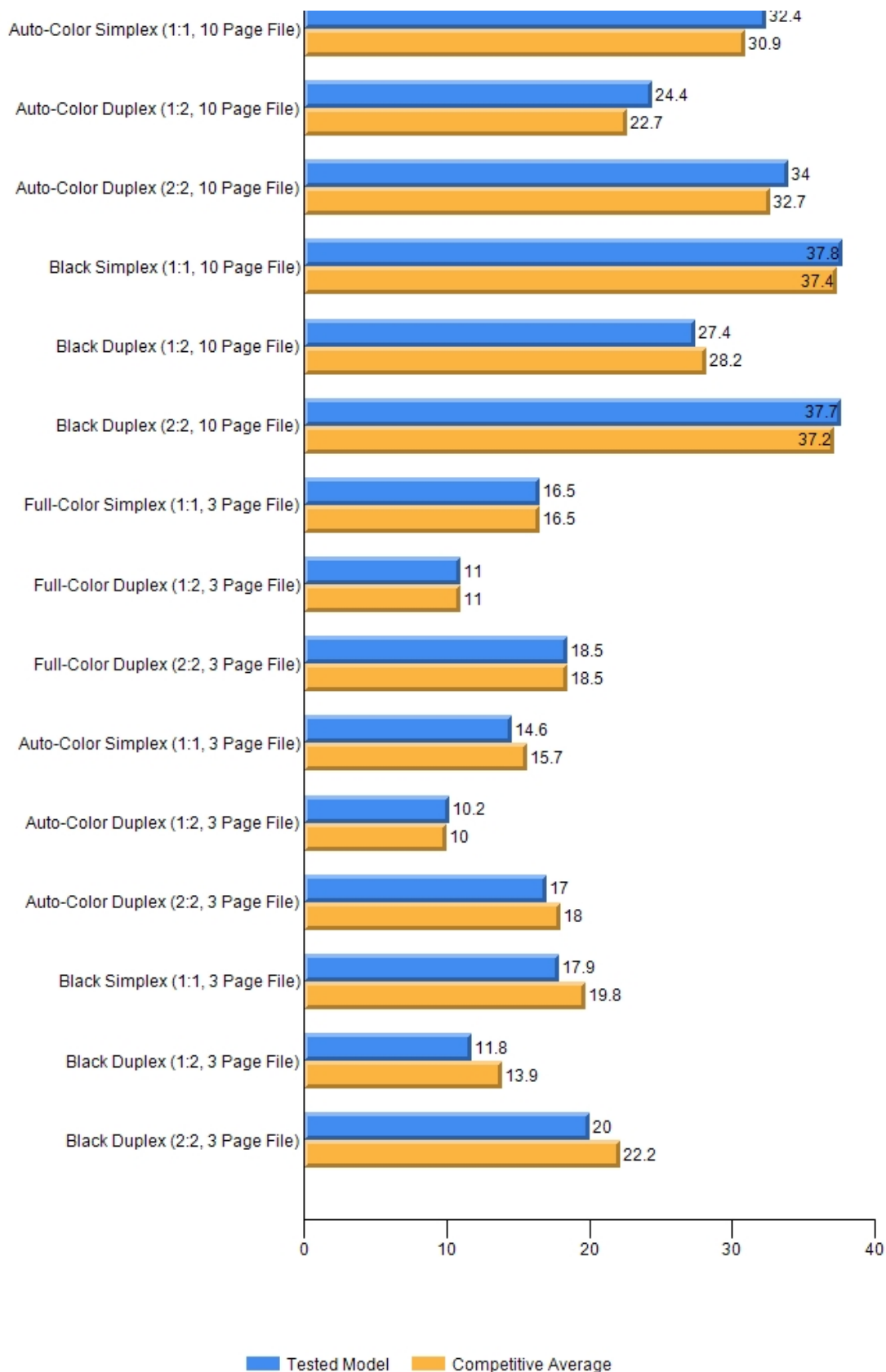
First-Copy Times (in Seconds)



First-copy time is measured as the time it takes for a single copy to completely exit the device when a copy is made from an original placed in the document feeder and on the platen.

Single-Set Copy Speed (in CPM)





Single-set copy speed is tested using 3-page and 10-page mixed-color and black documents. Timing begins as the start button is pressed, pages are scanned through the document feeder and timing ends when the last page of a single-set of the document exits the device.

POWER CONSUMPTION

NOT RATED

Projected Annual Energy Consumption (in kWh)

Total Annual Energy Consumed	87.4723
Competitive Average	156.4033
Pages Printed	414 total - 6 jobs of 69 pages each
Test Documents Used	DOC, XLS, PPT, HTML, PDF, Outlook e-mail messages
Output Modes	50% simplex, 50% duplex

Calculations based on printing Keypoint Intelligence's job stream test suite over a four-hour period, with the machine set to go into its energy-save and/or sleep modes at the shortest intervals possible. Total yearly energy consumption is calculated based on the total energy used during a typical workday, plus overnight and weekend sleep energy. Total number of pages run is based on a Keypoint Intelligence survey of average monthly volumes by speed range.

Environmental Features

Specified capable of running recycled paper (30%/50%/100% post-consumer content)	Yes/Yes/Yes
Instant/Quick Fusing	Yes
Duplexing	Yes
Toner-save mode	Yes
RoHS compliant	Yes
Toner cartridge recycling program for this product	INA
Ability to program features such as duplexing and auto shut-off over entire fleet	Yes
What tool can be used to do this?	Universal Print Driver
Eco-Label Certifications	
ENERGY STAR	Yes
Other	ECMA-370/The Eco Declaration; Germany Blue Angel; Japan Eco Mark

INA: The vendor declined to provide this information

NA: Not applicable

SUPPORTING TEST DATA

Environment: Keypoint Intelligence's UK lab is powered by dedicated circuits and monitored by two Extech humidity/temperature dataloggers, which ensure that typical office conditions are maintained.

Equipment: Dedicated test network in the UK, consisting of Windows 2012, 2016, and 2019 servers; lab workstations that support Windows 7, 8, and 10 operating systems (virtual machine capability to allow support for Mac and legacy MS Windows operating systems); a Yokogawa power meter; 10/100/1000BaseTX network switches; and CAT5e/6 cabling.

Duration: Two months, a portion of which consists of a durability test where the product is run at its full manufacturer-rated maximum monthly volume, with 75% of the test volume comprised of print jobs and 25% comprised of copy jobs. Daily test usage is designed to replicate real-world use over an eight-hour workday and includes a mix of various-size documents; simplex and duplex modes; short, medium, and long run lengths; and on/off cycles, throughout the day.

Procedures: Testing includes proprietary and industry-standard test procedures and documents. The reliability test is conducted using Boise, NORPAC, and The Navigator Company paper in the US and Mondi paper in the UK. In both labs, 30% of the paper is recycled.

Configuration: Lab tested Canon imageRUNNER ADVANCE DX C5860i base unit, plus paper feed unit 2 x 550 sheets (AQ1), booklet finisher (AB1), and DADF (C1).

Competitive Average Model Group: "Competitive" is defined as comparably equipped models that support the same maximum paper size as the tested model, in the same speed range (+/-5 ppm), with a similar duty cycle and target market. Tested speed performance is compared to competitive devices in the speed range tested to date. For all other sections that have data analysis, comparisons are made against competitive devices in the speed range.

Note: This report is based on testing one representative test sample at a specific point in time. Keypoint Intelligence is not responsible for differences in performance that may be the result of lot-to-lot variation, changes in production and machine modifications implemented by the manufacturer, service issues, or any other reason beyond Keypoint Intelligence's control. Test unit serial #: 2XN01122.

About Keypoint Intelligence: For 60 years, clients in the digital imaging industry have relied on Keypoint Intelligence for independent hands-on testing, lab data, and extensive market research to drive their product and sales success. Keypoint Intelligence has been recognized as the industry's most trusted resource for unbiased information, analysis, and awards due to decades of analyst experience. Customers have harnessed this mission-critical knowledge for strategic decision-making, daily sales enablement, and operational excellence to improve business goals and increase bottom lines. With a central focus on clients, Keypoint Intelligence continues to evolve as the industry changes by expanding offerings and updating methods, while intimately understanding and serving manufacturers', channels', and their customers' transformation in the digital printing and imaging sector.

CERTIFICATE OF RELIABILITY

Canon imageRUNNER ADVANCE DX C5860i



A handwritten signature in blue ink that reads "Anthony Sci".

Anthony Sci, President and CEO

November 2021

Date

This is to certify that when subjected to a 300,000-impression Keypoint Intelligence durability test, the Canon imageRUNNER ADVANCE DX C5860i proved to be a highly reliable product.

KEYPOINT INTELLIGENCE

THE LEADING INDEPENDENT GLOBAL DOCUMENT IMAGING PRODUCT TEST LAB

KEYPOINT INTELLIGENCE • NORTH AMERICA • EUROPE • ASIA • KEYPOINTINTELLIGENCE.COM

© 2021 Keypoint Intelligence. Reproduced with permission.