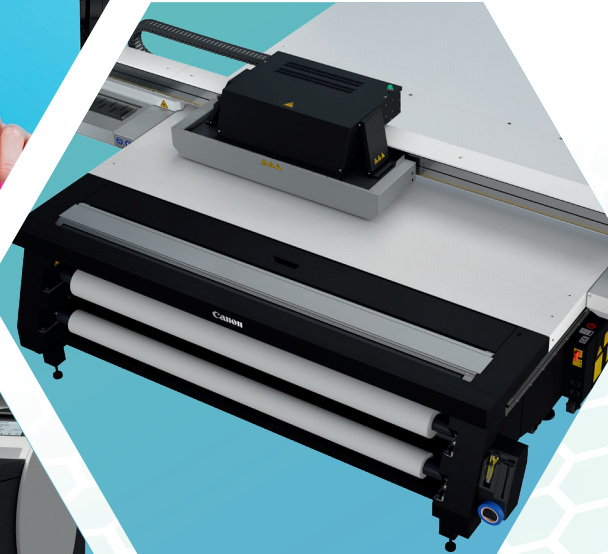


Canon



LARGE FORMAT PRINTING SOLUTIONS

**HELPING YOU REACH
NEW HEIGHTS**



A FAMILY OF SOLUTIONS

LARGE-FORMAT PRINTING SOLUTIONS. CANON INNOVATION IN EVERY PRINT.

As a worldwide innovation leader for over 80 years, Canon has a legacy of cultivating breakthrough technologies. Its expertise in the areas of science, engineering, and manufacturing has produced world-leading imaging solutions and consistent placement among the top U.S. patent holders of the decade.

This corporate culture of technological innovation drives the company to produce an ever-expanding range of large-format printing solutions, each one carefully crafted to address specific customer needs in each market segment served. As a result, the large format family has grown into a broad array of solutions that offer Canon's customers more features, functions, and options than ever before.

Today, the line of Canon large-format printers is at the forefront of the industry. Canon's award-winning printers are an ideal platform for innovation. Specialized customer solutions and applications range from fine art and photography, textiles and dye-sublimation, to production printing, technical documents and general purpose poster-making.

You can extend your application capabilities even further with incredible leading technologies such as varnish, white ink, and raised texture printing, and complement with smart cutting and finishing accessories. In fact, your potential to profit from creating high-value output is limited only by your imagination.

The following devices shown above, from left to right and top to bottom:

Colorado 1650, ColorWave 3800, PlotWave 5500, TZ-3100 MFP Z36, GP-4000 w/ optional paper roll, PRO-6100 w/ optional paper roll, TM-305, TX-3100 MFP Z36, TA-30, Arizona 2300 Series GTF

TABLE OF CONTENTS

GRAPHIC DESIGN SYSTEMS

ARIZONA SERIES	4
COLORADO SERIES.....	5
imagePROGRAF PRO SERIES	6
imagePROGRAF GP SERIES.....	8

PRODUCTIVE CAD / TECHNICAL DOCUMENT SYSTEMS

ColorWave SERIES	10
PlotWave SERIES	11
imagePROGRAF TZ SERIES	12

MID - LOW VOLUME/ GENERAL OFFICE

imagePROGRAF TX SERIES	13
imagePROGRAF TM SERIES	14
imagePROGRAF TA SERIES	15

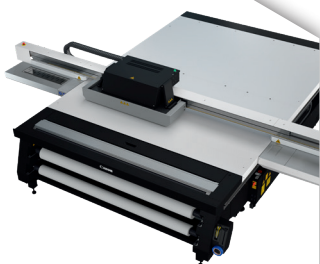


GRAPHIC DESIGN SYSTEMS

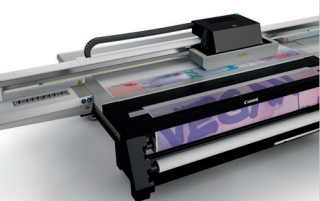
ARIZONA SERIES

Canon Arizona UV flatbed printers are all based on a true, stationary platform delivering exceptional image quality and application versatility. These printers can print directly onto rigid substrates or, based on model, can also print on roll media. The prints are suitable for indoor and outdoor use and the inks are GREENGUARD Gold certified. Arizona series printers give professional print service providers the ability to offer premium printing services.

- True stationary flatbed versatility and performance at an exceptional price
- Includes White ink capability for backlights or printing onto colored objects
- Roll Media Option available for true roll-to-roll capability
- VariaDot imaging technology for near-photographic results
- Instant switching between flatbed printing and optional roll-to-roll
- ONYX Thrive enables a true end-to-end PDF workflow from digital file submission through color management, printing and cutting



Arizona
2300 series



Arizona
135 GT

MODEL

6100 XTHF Mark II Series

6100 XTS Mark II Series

2300 Series XTF

2300 Series GTF

1300 Series XT

1300 Series GT

365 GT

135 GT

MAXIMUM SIZE

98.4" x 126" x 1" flatbed only

98.4" x 121.3" x 2" flatbed only

98.4" x 121.3" x 2" flatbed, 87" Wide roll

49.6" x 98.8" x 2" flatbed, 87" Wide roll

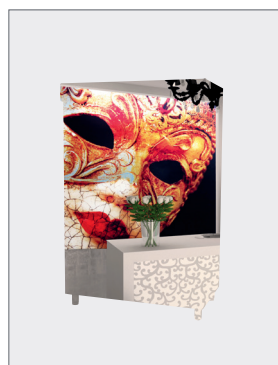
121.3" x 98.4" x 2" flatbed, 87" Wide roll

49.2" x 98.4" x 2" flatbed, 87" Wide roll

98" x 49" x 1.89" flatbed, 87" Wide roll

49.2" x 98.4" x 2" flatbed, 87" Wide roll

Ink sets depend upon configuration



GRAPHIC DESIGN SYSTEMS

COLORADO SERIES



Colorado series roll-to-roll printers are designed to deliver accurate, repeatable prints at high print speeds. With FLXfinish⁺, the Colorado printer series can print matte AND gloss on one print in one pass to create beautiful and striking output! You now have a clear choice that will deliver real production efficiency while helping to lower operating costs, potentially increasing profits.

- Fastest 64" production printer in its class to help reduce production times
- Lower ink usage can help lower production costs
- Unattended production helps enable labor savings
- Print matte and gloss on the same print without varnish
- Highly accurate color and geometric consistency helps to reduce rework and waste
- Jumbo Roll & Wallpaper Factory capabilities help create labor savings
- ONYX Thrive enables a true end-to-end PDF workflow from digital file submission through color management, printing, and cutting



**Colorado
1650**



**Colorado
1630**

MODEL

COLORADO 1650
COLORADO 1630

MAXIMUM SIZE

64" Wide
64" Wide

INKS

4 color – CYMK UV Gel
4 color – CYMK UV Gel





GRAPHIC DESIGN SYSTEMS

imagePROGRAF PRO SERIES

Built for professionals who appreciate the difference between ordinary and extraordinary print quality, these imagePROGRAF large-format printers deliver a unique combination of ultra-high-quality imaging, with a pigment ink set capable of producing subtle hues and deep shadows.

- Archival LUCIA PRO Ink
- Intelligent Media Feeding
- Professional Print & Layout Workflow Software to crop image, nest photos, and much more
- Built-in multi-sensor for color consistency from print to print and device to device
- Color Calibration Management Console allows you to reach a whole new level of color management and uniformity

MODEL

PRO-6100

PRO-4100

PRO-2100

MAXIMUM SIZE

60" Wide

44" Wide

24" Wide

INKS

11-Color plus Chroma Optimizer

11-Color plus Chroma Optimizer

11-Color plus Chroma Optimizer



PRO-6100



PRO-2100



GRAPHIC DESIGN SYSTEMS

imagePROGRAF PRO SERIES



The imagePROGRAF S-Series production printing systems with Canon's LUCIA PRO inks are Canon's fastest Graphic Arts large-format printers. Ideal for professionals who need maximum productivity, an extraordinary range of vibrant colors, and versatility of their large-format printing services.

- Color Calibration Management Console allows you to reach a whole new level of color management and uniformity
- Optional multi-functional roll unit for maximum productivity
- Borderless printing
- Intelligent Media Feeding
- Enhanced security features

MODEL

PRO-6100S

PRO-4100S

MAXIMUM SIZE

60" Wide

44" Wide

INKS

8-Color

8-Color



PRO-6100S



PRO-4100S





GRAPHIC DESIGN SYSTEMS

imagePROGRAF GP SERIES

The GP Series printers are the world's first large-format printers with aqueous pigment Fluorescent Pink Ink, equipped with Canon's unique Radiant Infusion which layers the Fluorescent Pink ink with other inks on the paper surface during printing to create bright and soft color reproduction.*

The 44" GP-4000 and 24" GP-2000 are 10-color plus Fluorescent Pink Ink large-format printers. With the Red, Orange, Green, Violet, and Fluorescent Pink inks, the imagePROGRAF GP-2000 printer has the largest color gamut of any imagePROGRAF printer to date.

- imagePROGRAF GP Series, the world's first* aqueous inkjet models to include Fluorescent Pink ink
- The world's first PANTONE® calibrated printers for PANTONE® PASTELS & NEONS GUIDE coated
- Intelligent Media Handling
- Built-in color calibration

MODEL

GP-4000

GP-2000

MAXIMUM SIZE

44" Wide

24" Wide

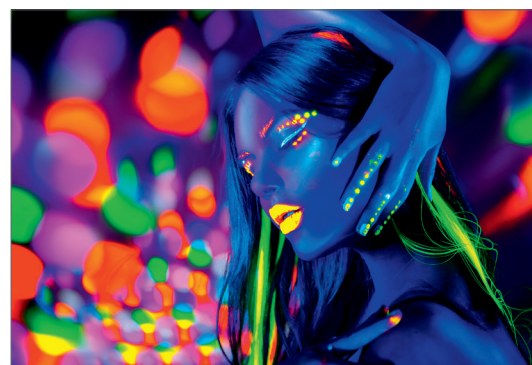
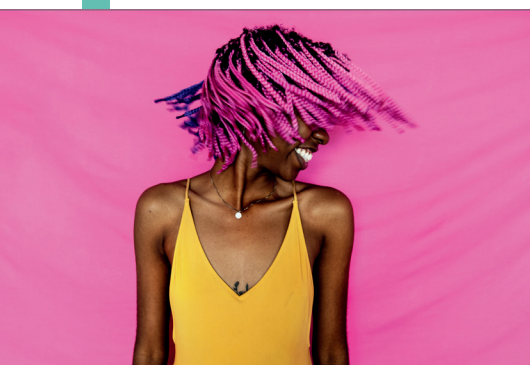
INKS

10-Color plus Fluorescent Pink

10-Color plus Fluorescent Pink

** In major aqueous pigment, large-format inkjet printer manufacturers (excluding sublimation transfer systems). As of 09/27/2021 (Canon research).*

PANTONE® is a trademark or registered trademark of PANTONE® LLC in the United States and/or other countries. As of September 27, 2021, according to professional services performed by PANTONE® under License Agreement between Canon, Inc. and PANTONE® LLC. PANTONE® PASTELS & NEONS GUIDE Coated color gamut coverage rate is 97% for GP-4000/GP-2000 when using Photo Paper Pro Premium Platinum with imagePROGRAF printer driver at [Poster/Photo (Fluorescent)] [Highest] (600 dpi). PANTONE® Colors generated may not match PANTONE®-identified standards. Consult current PANTONE® Publications for accurate color.



GRAPHIC DESIGN SYSTEMS

imagePROGRAF GP SERIES



The 36" GP-300 and 24" GP-200 are 5-color (MBK, BK, C, M, Y) plus Fluorescent Pink ink large format printers. These models are ideal for supporting in-house production of large format prints with increased appeal and visibility in various industries such as retail stores, restaurants, government offices, schools, and general companies.

- The world's first PANTONE® calibrated printers for PANTONE® PASTELS & NEONS GUIDE coated which includes fluorescent and pastel colors.
- Direct USB drive printing
- Space-saving design
- Secure print features

MODEL

GP-300

GP-200

MAXIMUM SIZE

36" Wide

24" Wide

INKS

5-Color plus Fluorescent Pink

5-Color plus Fluorescent Pink



GP-300



GP-200





PRODUCTIVE CAD / TECHNICAL DOCUMENT SYSTEMS

ColorWave SERIES

Push the boundaries of your large format printing with the ColorWave series printing system, a monochrome and color printer, scanner, and copier in one convenient single footprint. Gain a competitive edge with distinctive high-quality wide format drawings and presentations without the need for expensive coated paper. With its intuitive design, the ColorWave series color printer allows for easy end-user walk-up capability using ClearConnect controller software.



**ColorWave
3800**



**ColorWave
3600**

- The prints are instantly dry with the patented CrystalPoint technology
- Helps ensure robust, waterfast prints with sharp lines, high readability of fine details, and smooth, even area fills
- ImageLogic Technology – turns imperfect originals into high quality copies and scans
- Built-in security features
- Integrated job submission software
- 2 - 6 rolls capacity
- Up to 25,000 sqft/month
- Up to 4 D prints/minute

MODEL

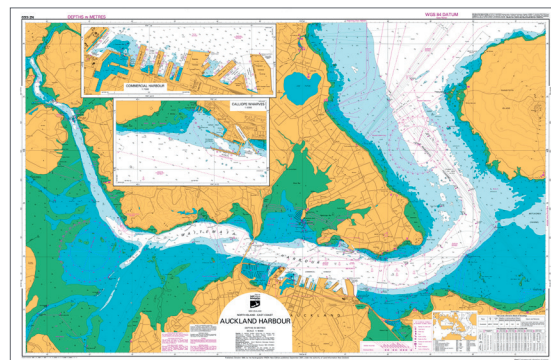
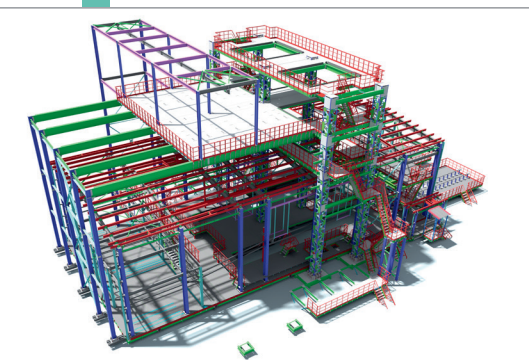
ColorWave 3800
ColorWave 3600

MAXIMUM SIZE

42" Wide
42" Wide

TONERS

4 Colors
4 Colors



PRODUCTIVE CAD / TECHNICAL DOCUMENT SYSTEMS

PlotWave SERIES



The PlotWave Series is ideal for decentralized low-volume to mid-volume walk-up printing environments. These devices are utilized by workgroups of monochrome CAD professionals who require both productivity and ease of use, leveraging the latest controller hardware running Windows 10 IoT LTSC 64-bit operating system, and new standard security features. The Scanner Express IV option integrates directly on top of the printer for a Single Footprint MFP configuration.

- ImageLogic Technology – turns imperfect originals into high quality copies and scans
- Radiant Fusing Technology – eco-friendly fusing method, providing instant-on printer availability with no warm-up time
- Integrated job submission software
- Built-in security features
- Up to 6 rolls capacity
- Up to 60,000 sqft/month
- Up to 10 D prints/min

MODEL

PlotWave 7500
PlotWave 5500
PlotWave 5000
PlotWave 3500
PlotWave 3000

MAXIMUM SIZE

36" Wide
36" Wide
36" Wide
36" Wide
36" Wide

TONERS

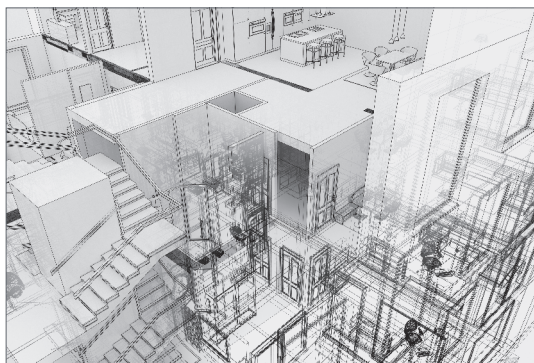
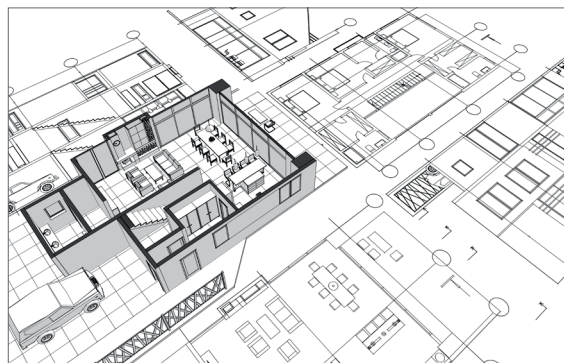
Monochrome
Monochrome
Monochrome
Monochrome
Monochrome



**PlotWave
5500**



**PlotWave
3500**





PRODUCTIVE CAD / TECHNICAL DOCUMENT SYSTEMS

imagePROGRAF TZ SERIES

The imagePROGRAF TZ Series seizes and expands the production aqueous inkjet market with its ability to print black-and-white line drawings and full-color posters on multiple media substrates that LED devices are unable to support. This hybrid model is uniquely qualified to capture market share where overall print volumes are trending lower and the need to get more out of a machine is a business necessity. This MFP includes the Z36 scanner and intuitive system controller making it a powerful addition to Canon's portfolio of large format printers perfect for scanning maps, drawings, and renderings.

- imagePROGRAF TZ Series - the fastest imagePROGRAF EVER
- Up to 4 D prints/minute
- Up to 244 D prints/hour
- Integrated 100-print capacity top stacker
- Dual-roll Intelligent Media Handling System that detects media type width and length
- Scan monochrome drawings at up to 13" per second and color up to 6" per second

MODEL

TZ-30000
TZ-30000 MFP Z36

MAXIMUM SIZE

36" Wide
36" Wide

INKS

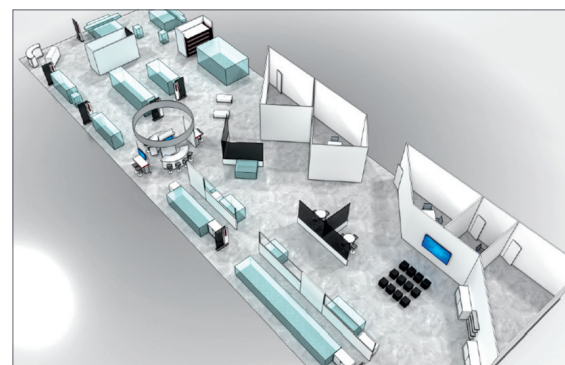
5-Color
5-Color



TZ-30000



**TZ-30000
MFP Z36**



MID VOLUME/ GENERAL OFFICE

imagePROGRAF TX SERIES



The imagePROGRAF TX Series large-format printing system is a platform designed to help meet the evolving needs of your customers. Canon innovations and a full complement of solutions help improve productivity, maximize utilization, facilitate access, and enhance security features—all in a seamless system that puts you at the forefront of the large-format printing industry.

- 5 Color LUCIA TD pigment inks
- Print speeds of up to 190 D-sized prints per hour*
- Wi-Fi (registered trademark) ready** & cloud-enabled***
- Scan-to-Copy/File/Share capability
- Scan monochrome drawings at up to 13" per second and color up to 6" per second



TX-4100



**TX-3100
MFP Z36**

MODEL

TX-4100

TX-4100 MFP Z36

TX-3100

TX-3100 MFP Z36

MAXIMUM SIZE

44" Wide

44" Wide

36" Wide

36" Wide

INKS

5-Color

5-Color

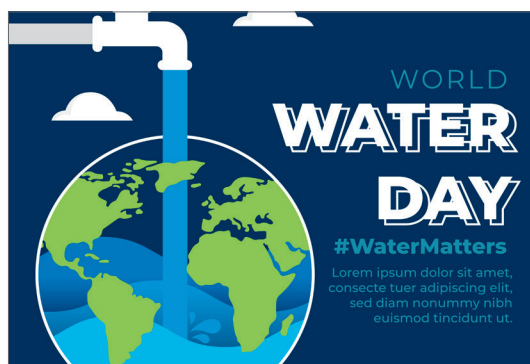
5-Color

5-Color

* Plain paper, fast (Q5) mode

** Wireless printing requires a working network with wireless 802.11b/g or 802.11n capability. Wireless performance may vary based on terrain and distance between the printer and wireless network clients. Wi-Fi is a registered trademark of the Wi-Fi Alliance.

*** Subscription to a third-party cloud service is required for certain features. Subject to third-party cloud service provider's Terms and Conditions. Specifications and availability subject to change without notice.





MID - LOW VOLUME/ GENERAL OFFICE

imagePROGRAF TM SERIES

The TM Series is redefining the capabilities of a large-format printer. These printers are not only ideal for technical documents, CAD drawings, and GIS maps, but also posters, signage, and displays with the use of Canon's LUCIA TD pigment inks. The TM Series is available as an entry-level MFP solution or as an advanced MFP Z36 system.

- 5 Color LUCIA TD pigment inks
- Print speed up to 144 D-sized prints per hour
- Direct USB drive printing (TM-305 only)
- A flat stacker basket
- Z36 scans monochrome drawings at up to 13" per second and color up to 6" per second
- Lei can scan up to 3 inches per second monochrome, 1 inch per second color
- Host of creative workflow software included



**TM-305
MFP Z36**



TM-200

MODEL

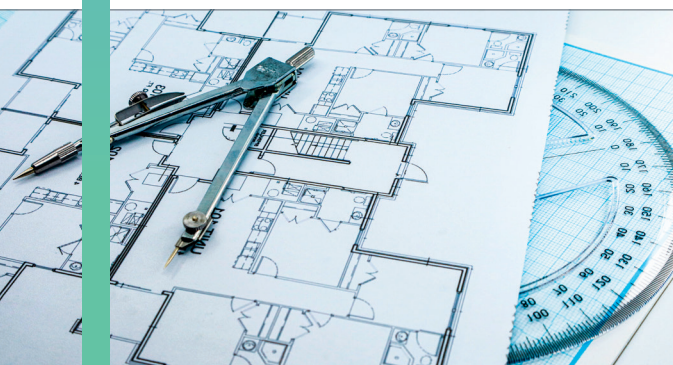
TM-305
TM-305 MFP Z36
TM-300
TM-300 MFP Z36
TM-300 MFP L36ei
TM-200
TM-200 MFP L24ei

MAXIMUM SIZE

36" Wide
36" Wide
36" Wide
36" Wide
36" Wide
24" Wide
24" Wide

INKS

5-Color
5-Color
5-Color
5-Color
5-Color
5-Color
5-Color



MID - LOW VOLUME/ GENERAL OFFICE

imagePROGRAF TA SERIES



Bring your printing in-house with the imagePROGRAF TA Series. This series offers end users Canon's high-quality software and overall brand value in a cost efficient, easy-to-use solution built to stimulate workflow and productivity for small businesses and first-time print users. Ideal for technical documents, posters, and designs, this series has the ability to print on water-resistant media for short-term outdoor signage.

- 5 Color LUCIA TD pigment inks
- Prints up to 104 24" x 36" posters per hour*
- PosterArtist Lite and other layout software included
- Compact footprint for small office/home office
- Entry-level MFP solution available



**TA-30 MFP
L36ei**



TA-20

MODEL

TA-30
TA-30 MFP L36ei
TA-20
TA-20 MFP L24ei

MAXIMUM SIZE

36" Wide
36" Wide
24" Wide
24" Wide

INKS

5-Color
5-Color
5-Color
5-Color

*Fast (Q5) Mode

**SUM
MER**

SALE



SAT 4PM



**SUMMIT
WAREHOUSE**

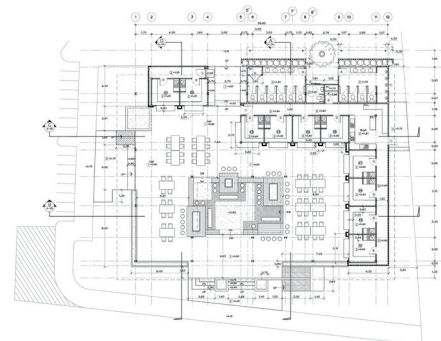
12345 ADDRESS DRIVE

AnyCity Public Library invites you to

LITTLE LIBRARIES BOOK CAMPAIGN

We're building mini libraries
for homeless children!

Help us by dropping off your
old books at the library.
Call (123) 456-7890 for inquiries.





usa.canon.com/largeformat

The following devices were shown on the front cover:

ColorWave 3600 4-roll, imagePROGRAF TZ-30000 MFP Z36, Arizona 2300 Series, Colorado 1650, imagePROGRAF GP-4000 w/ optional MFR, imagePROGRAF TM-305

As an ENERGY STAR® Partner, Canon U.S.A., Inc. has qualified these models as meeting the ENERGY STAR energy efficiency criteria through an EPA recognized certification body. ENERGY STAR and the ENERGY STAR mark are registered trademarks owned by the U.S. Environmental Protection Agency. Canon and imagePROGRAF are registered trademarks of Canon Inc. in the United States and may also be registered trademarks or trademarks in other countries. Microsoft, Office, Windows, Outlook, Word, Excel, and PowerPoint are either registered trademarks or trademarks of Microsoft Corporation in the United States and/or other countries. Wi-Fi is a registered trademark of the Wi-Fi Alliance. Autodesk, the Autodesk logo, and AutoCAD are registered trademarks or trademarks of Autodesk, Inc., and/or its subsidiaries and/or affiliates in the U.S.A. and/or other countries. All other referenced product names and marks are trademarks of their respective owners. Certain printer output and screen images are simulated. Canon products offer certain security features, yet many variables can impact the security of your devices and data. Canon does not warrant that use of its features will prevent security issues. Nothing herein should be construed as legal or regulatory advice concerning applicable laws; customers must have their own qualified counsel determine the feasibility of a solution as it relates to regulatory and statutory compliance. Some security features may impact functionality/performance; you may want to test these settings in your environment. Subscription to a third-party cloud service is required for certain features. Subject to third-party cloud service provider's Terms and Conditions. Specifications and availability subject to change without notice. Not responsible for typographical errors.
©2022 Canon U.S.A., Inc. All rights reserved.